

Advising on Antiracist Food Policy in this Moment

Philadelphia Food Policy Advisory Council



Phillyfpac.org, fpac@phila.gov, [Facebook](#) and [Twitter](#): @PhillyFPAC

Sign-in Instructions

- A. For those using the Zoom app/platform, **change username to First Name and Last Initial and add your pronouns.** *Example: Octavia B (she/her)*

Instructions: Hover mouse over your video tile, then click button with 3 dots

- B. Please **complete the poll at:** menti.com & use code “22 62 54”
- C. Please **stay on mute** to help limit unnecessary sounds and folks talking over each other.
- Use the “chat” function or raise your “hand” if you’d like to speak
 - For those calling in, use *6 to unmute

Tech support: 518-573-7875 (call/text) or zachary.greene@phila.gov



Four Roles of Social Change www.trainingforchange.org

Which role do you most strongly identify with?

Take the poll: Go to “menti.com” and use the code “22 62 54”

Learn more:
bit.ly/4roles4change

[Attend Trainings with and Support Training for Change](#)



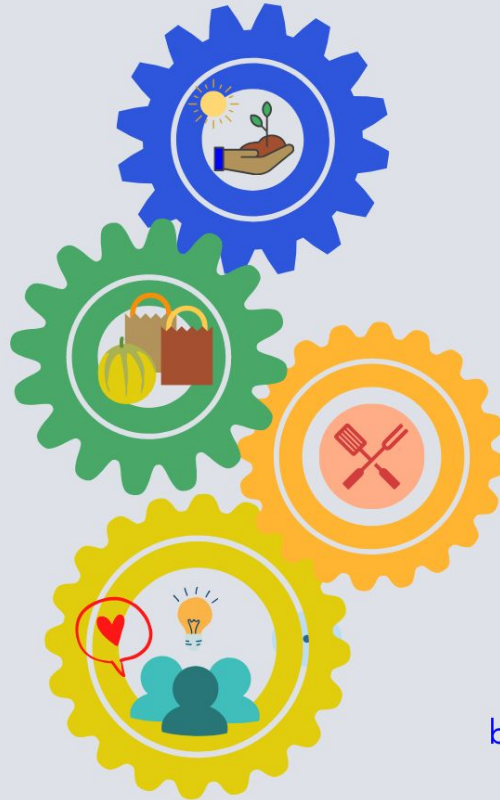
<u>Effective</u>	Helper	<u>Ineffective</u>
<ul style="list-style-type: none">Assists people in ways that affirm their dignity and respectShares skills and brings clients into decision making rolesEducates about the larger social systemEncourages experiments in service delivery which support liberation		<ul style="list-style-type: none">Believes charity can handle social problems, or that helping individuals can change social structuresFocuses on casualties and refuses to see who benefits from victimizationProvides services like job training which simply give some people a competitive edge over other people, without challenging the scarcity which gives rise to competition

<u>Effective</u>	Rebel	<u>Ineffective</u>
<ul style="list-style-type: none">Protests: says “no!” to violations of positive American valuesEmploys nonviolent direct action and attitude, including civil disobedienceTargets power holders and institutionsPuts problems & policies in public spotlightUses strategy as well as tacticsDoes work that is courageous, exciting, riskyShows in behavior the moral superiority of movement values		<ul style="list-style-type: none">Promotes anti-leadership, anti-organization rules and structureAttached to an identity as lonely voice on society’s fringeUses tactics without realistic strategyHas victim attitude, behavior: angry, judgmental, dogmaticUses rhetoric of self righteousness, absolute truth, moral superiorityCan be strident: personal upset more important than movement’s needs

<u>Effective</u>	Advocate	<u>Ineffective</u>
<ul style="list-style-type: none">Uses mainstream institutions like courts, city hall, legislatures to get new goals and values adoptedUses lobbying, lawsuits, elite networking/ coalition-building for clearly-stated demands, often backed by researchMonitors successes to make sure they are implemented		<ul style="list-style-type: none">“Realistic politics”: promotes minor reforms acceptable to power-holdersPromotes domination by top-down professional advocacy groupsMore concerned with organization’s status than the goal of their social movementIdentifies more with power holders than with grassrootsDoes not like paradigm shifts

<u>Effective</u>	Organizer	<u>Ineffective</u>
<ul style="list-style-type: none">Believes in people power: builds mass based grassroots groups, networksNurtures growth of natural leadersChooses strategies for long-term movement development rather than focusing only on immediate demandsUses training to build skills, democratize decisions, diversify and broaden organization and coalitionsPromotes alternatives and paradigm shifts		<ul style="list-style-type: none">Has tunnel vision: advocates single approach while opposing those doing all othersPromotes patriarchal leadership stylesPromotes only minor reformStifles emergence of diversity and ignores needs of activistsPromotes visions of perfection cut off from practical political and social struggle

Welcome!



JOIN THE PHILADELPHIA
FOOD POLICY ADVISORY
COUNCIL FOR....

**ADVISING ON
ANTIRACIST
FOOD POLICY
IN THIS
MOMENT**

RESCHEDULED

**NEW DATE:
06.10.2020
3-5PM**

bit.ly/FPACJune10th



Opening Words for this Moment

Reverend Naomi Washington-Leapheart

Director for Faith-Based and Interfaith Affairs

Mayor's Office of Public Engagement, City of Philadelphia

Co-facilitators



Co-Chairs

Calvin Okunoye calvin@rocunited.org

Amanda Wagner amanda.wagner@phila.gov

Manager

Kristin Schwab kristin.schwab@phila.gov

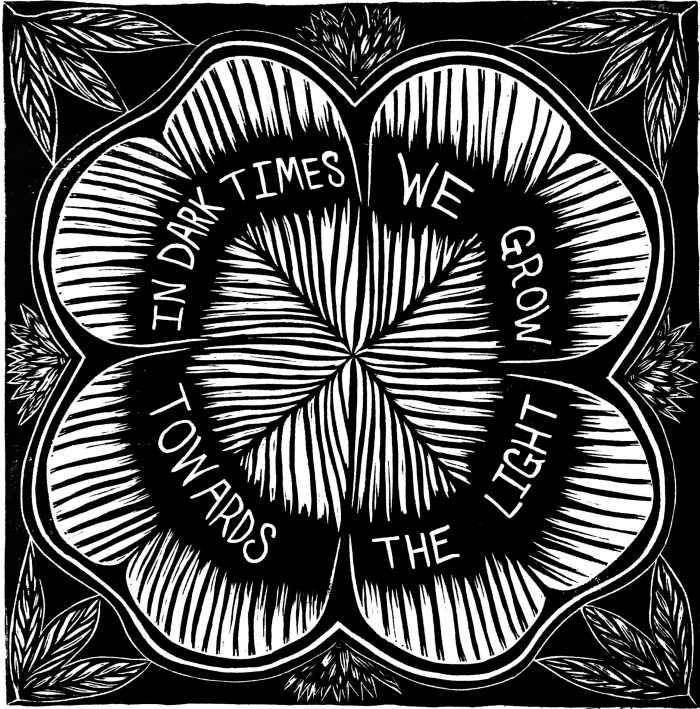
Good Food Procurement Subcommittee

Co-Chairs

Catherine Bartoli catherine.bartoli@phila.gov

Molly Riordan molly.riordan@phila.gov

Support team (here to make this work for us all)



Zach Greene (tech support from 3 - 4PM)

- Chat
- Text or call 518-573-7875

Ciara Williams (host/tech support)

- Chat

Matina Granieri (live note-taking)

Intro to FPAC

The [Philadelphia Food Policy Advisory Council](#) connects Philadelphians and our local government to create a more just food system—where all people have the power to access, own and control our food, land and labor.

FPAC has 31 appointed members and 6 subcommittees. All meetings are open to the public.

Subcommittees:

- [Anti-Hunger](#)
- [Food & Health](#)
- [Good Food Procurement](#)
- [Urban Agriculture](#)
- [Workforce & Economic Development](#)
- [Zero Waste](#)

WE ARE



EACH OTHER'S HARVEST;
WE ARE
EACH OTHER'S BUSINESS;
WE ARE
EACH OTHER'S MAGNITUDE AND BOND.

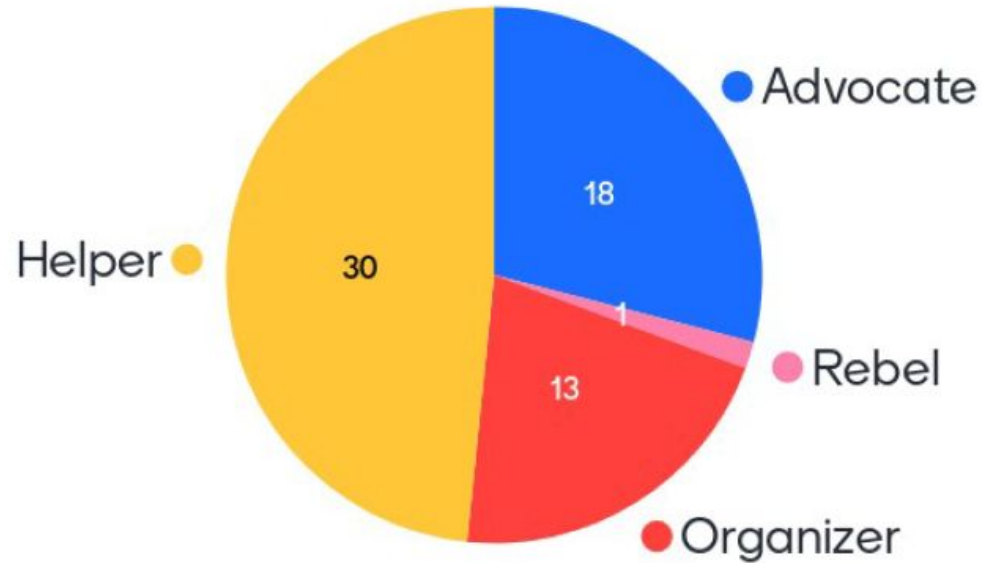
- GWENDOLYN BROOKS.

Roll call: who's here?

Haven't signed in? Take the poll at menti.com & use code "22 62 54"

- Addie Hass
- Alice Huang
- Alya Nadji
- Amanda Evans
- Amanda Wagner
- Amara O'Connell
- Amy Goldstein
- Ayanna Moore
- Ben Logue
- Beth Alarcon
- Bridget Palombo
- Catherine Bartoli
- Ciara Williams
- Danielle Talenti
- Deb Bentzel
- Devon Sundberg
- Ebony Griffin
- Emily Cribas
- Emily Fisher
- Emma Leister
- Erin Doyle-O'Connor
- Falguni Patel
- Hannah Chatterjee
- Helen Nadel
- Isel Otero-Vera
- Jackson Foltz
- Jax Gitzes
- Jen Aquilante
- Jen Malkoun
- Jennifer Pfluger
- Jerome Shabazz
- Jiana Murdic
- Joan Boyce
- JodyAnn McIntosh
- Justin Trezza
- Kaitlan Bender
- Katherine K
- Kathy Fisher
- Katie Milholin
- Kelly Courts
- Kelsey DeCerchio
- Laura Crandall
- Lauren Miller
- Liane Sullivan
- Luz Crespo
- Maddy Booth
- Maria Reyes
- Martina Granieri
- Michelle Katz
- Mimi Sheller
- Mindy Westover
- Molly Riordan
- Natalie Walker
- Nicole Westrick
- Nidhi Krishen
- Noah Christian
- OreOluwa Badaki
- Rachel Sherman
- Radha Pennotti
- Rickie Brawer
- Shayla Dorsey
- Sonia Galiber
- Susan Choi
- Susan Cosgrove
- Suzanna Urminska
- Tara Anastasi
- Theodoros Papazekos
- Valerie Erwin

Roll call: our roles in social change



FPAC Community Agreements

- ★ Value + affirm people's lived experience + identity
- ★ Use this space for your own learning + advancement
- ★ Move up, move up (into listening and sharing)
- ★ Notice intent, own your impact

COMMUNITY || AGREEMENTS ||

- VOICE YOUR NEEDS
- LISTEN FOR UNDERSTANDING, NOT RESPONSE
- NOTICE INTENT, OWN YOUR IMPACT
- THINK BEFORE YOU SPEAK
- TAKE CARE OF YOURSELF + OTHERS
- VALUE + AFFIRM PEOPLE'S LIVED EXPERIENCE + IDENTITY
- USE THIS SPACE FOR YOUR OWN LEARNING + ADVANCEMENT
- MAKE SPACE FOR PEOPLE to be their FULL SELVES
- RESPECT CONFIDENTIALITY
- STEP UP, + STEP BACK
- ALLOW ROOM FOR GROWTH WITHIN OURSELVES + FPAC

Goals



- Ground our work in the Movement for Black Live's policy demands
- Connect with one another across the food system and across race, class, gender, age, and ability
- Learn about the City's current policies around spending
- Prepare for advising the City on antiracist food policy

Agenda

- Welcome, grounding, and community agreements
- Movement for Black Lives Policy Demands
- City of PHL Policies on Spending
- Advising the City on Anti-racist Procurement Practices
- Next steps



Excerpt from “How to Be an Antiracist” by Ibram X. Kendi

“A **racist policy** is any measure that produces or sustains racial inequity between racial groups. An **anti-racist policy** is any measure that produces or sustains racial equity between racial groups. By policy, I mean written and unwritten laws, rules, procedures, processes, regulations, and guidelines that govern people. **There is no such thing as a non-racist or race-neutral policy. Every policy and every institution in every community in every nation is producing or sustaining either racial inequity or equity between racial groups.**”

Movement for Black Lives Policy Demands



INVEST-DIVEST



COMMUNITY CONTROL



REPARATIONS

The Movement for Black Lives launched the Vision for Black Lives, a comprehensive and visionary policy agenda for the post-Ferguson Black liberation movement, in August of 2016.

The Vision for Black Lives is a call and response leading us toward our North Star. Over the past several years we have updated policy briefs for each demand to reflect a dramatically changed political landscape since the Vision was launched, and in response to calls to deepen our Black feminist and disability justice analysis.

Revised, updated, and expanded policy briefs deepening our Vision for the current moment will be available for each of the six planks of the platform soon! learn more at about **all 8 policy demands** at m4bl.org/policy-platforms/

In small groups

- Read the next slide “What the M4BL’ Policy Says About Food” out loud (also in the chat)
- Share (1 person at a time)
 - One demand that resonates with me is...
 - What I can do to advocate for/move forward these demands...
- Reminder
 - Use this space for your learning and advancement
 - Share authentically from your heart and lived experience

What the M4BL' Policy Says About Food

[learn more here](#)

Across their policy platform, the Movement for Black Lives contains a number of food and agriculture-related demands, including:

1. A constitutional right to a fully-funded Pre K-12 education, which would include the right to high quality breakfast and lunch for all Black children.
2. Tuition- and fee-free agricultural education at colleges and universities for all Black students.
3. An end to mass incarceration and the privatization of prison labor and services, including farmwork and food services.
4. Divestment from industrial agriculture that relies on fossil fuel, agricultural chemicals, a resource-heavy transportation system as well as a shift toward local, sustainable energy sources and systems.
5. A shift toward decentralized, community-controlled food hubs and cooperative organizations.
6. A right to restored land, clean air, clean water, and housing.
7. A halt to all foreclosures of Black farmland and the elimination of all Black farmer debt.
8. An end to discriminatory credit policies by financial institutions in order to enable access to farmable land.
9. Guaranteeing access to public funding for community land trusts, food co-ops, and food hubs for Black people.
10. Full protections for workers in industries that are not appropriately regulated such as farm workers, including those who are incarcerated.
11. Universal basic income that would not be tied to employment as an alternative to public health and nutrition assistance programs like Supplemental Nutrition Assistance Program (SNAP) and the Women, Infants, and Children program (WIC).
12. Reparations for the wealth extracted from Black communities through food apartheid, environmental racism, and racialized capitalism to ensure access and control of land and food sources.

City Budget Teach-in

Presented by Kate Goodman

In partnership with Britt Alson (Action Center for Race and the Economy) & Stan Shapiro (Neighborhood Networks)

This presentation was abbreviated and updated from a City Budget Teach-in hosted by the Campaign for a Just Philly Budget on June 1, 2020. Here are resources from that teach-in. You are welcome to share with your networks.

- [The slide deck used](#)
- [A recording of the Zoom Teach-In on Facebook](#)
- [A recording of the Zoom Teach-In \(off Facebook\)](#)
- [Call-In & Tweet-In Toolkit!](#)

E-mail phillymunicipalworkersunited@gmail.com with questions or to get more involved!

City Budget Teach In: What's in Kenney's Cuts?

*....and how do we fight to preserve critical city
services & staff?*

What is a City Budget?

A political tool that reflects the priorities of elected officials

The City Budget is an allocation of our tax dollars

What's the Process?

1. The Mayor Puts a Budget Together, based on city department requests
2. The Mayor Presents his Budget
3. Council Holds Budget Hearings
4. Amendments are made
5. The Budget is Passed

**PHILLY'S TOTAL BUDGET IS \$4.9
BILLION DOLLARS**

**That's \$341 MM less
than the original FY21
Budget!**

WE NEED MORE!

Quick Quiz: Where Do We Spend More \$\$\$?

1. Which department received a larger increase last year?
 - a. The Free Library
 - b. Licenses & Inspections
 - c. Police Dept.
2. Which department saw a larger decrease last year?
 - a. The First Judicial District Court
 - b. The Behavioral Health Department
3. Which department saw the greatest increase last year?
 - a. Police Dept.
 - b. Fire Dept.
 - c. Homeless Services Dept
4. Which *departments* above will see increases in the current, proposed budget?
 - a. Police Dept.
 - b. Fire Dept.
 - c. Homeless Services Dept

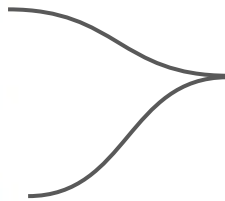
Quick Quiz: Where Do We Spend More \$\$\$?

1. Which department received a larger increase last year?
a. The Free Library b. Licenses & Inspections **c. Police Dept.**
2. Which department saw a larger decrease last year?
a. The First Judicial District Court **b. The Behavioral Health Department**
3. Which department saw the greatest increase last year?
a. Police Dept. b. Fire Dept. c. Homeless Services Dept
4. Which *departments* above will see increases in the current, proposed budget?
a. Police Dept. **b. Fire Dept.** c. Homeless Services Dept

Where Does Philly Spend Our Money?

FY21 Revised

▶ Employee Benefits	→	\$1.38B
▶ Police	→	\$760M
▶ Fire	→	\$321M
▶ Debt Service	→	\$281M



A Breakdown of Police Expenses 🙄

15% of total
budget

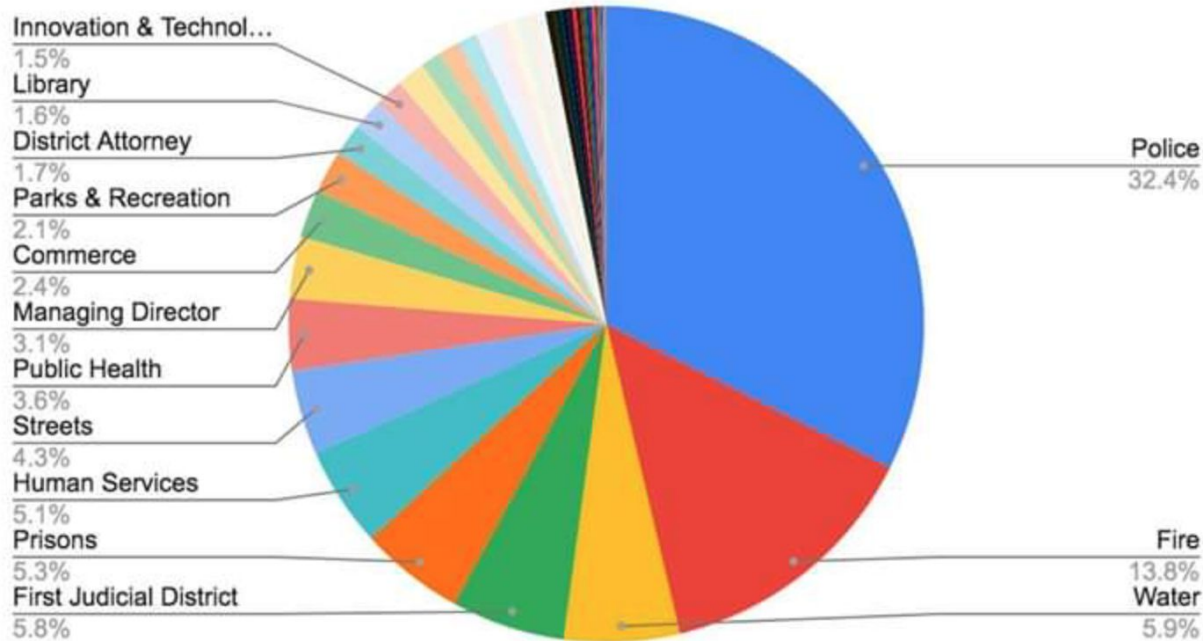
▼ Police		\$746M	\$760M	+\$14.0M
Police	Personal Services	\$723M	\$737M	+\$14.0M
Police	Materials/Equip.	\$13.6M	\$13.6M	\$0.00
Police	Purchase of Services	\$10.1M	\$10.1M	\$0.00
OIT: 911	Purchase of Services	\$14.2M	\$29.2M	+\$15.0M
OIT: 911	Materials/Equip.	\$8.06M	\$23.1M	+\$15.0M
OIT: 911	Personal Services	\$1.34M	\$1.34M	\$0.00

127% Increase

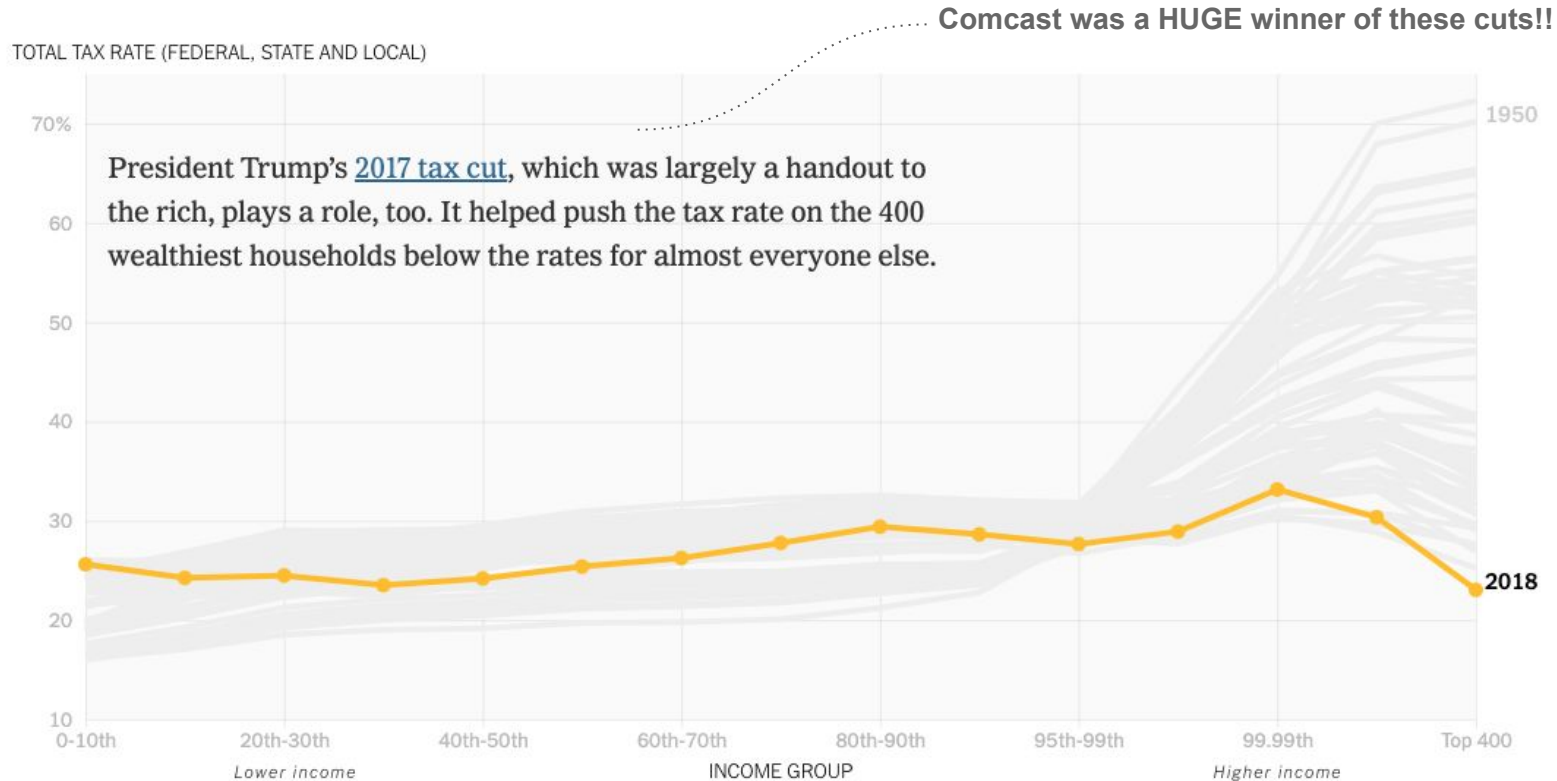
Cutting the police department in half closes the city's revenue gap + \$41MM

What is a City Budget?

Mayor Kenney's FY2021 Budget: Staffing Costs



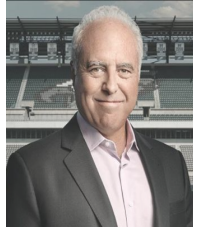
The Ultra Rich Hoard the Resources We Need



Locally, Who Has the Money?

There are **10 billionaires** in Pennsylvania.

Their net worth increased by an estimated **\$1.3 billion** from March 18th to May 26th. Even amidst the wreckage of the pandemic, the billionaires' collective net worth has rebounded and surged to **\$28.5 billion**.



Jeffrey Lurie, The Eagles



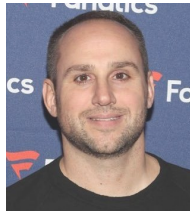
Brian Roberts, Comcast



Victoria Mars,
Candy Corp



John Middleton,
Phillies Owner and
Tobacco Co.



Michael Rubin, Online
Retail



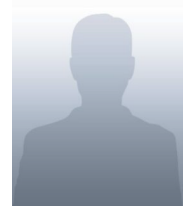
Thomas Hagen,
Insurance



Mary Alice Dorrance
Malone, Campbell's Soup



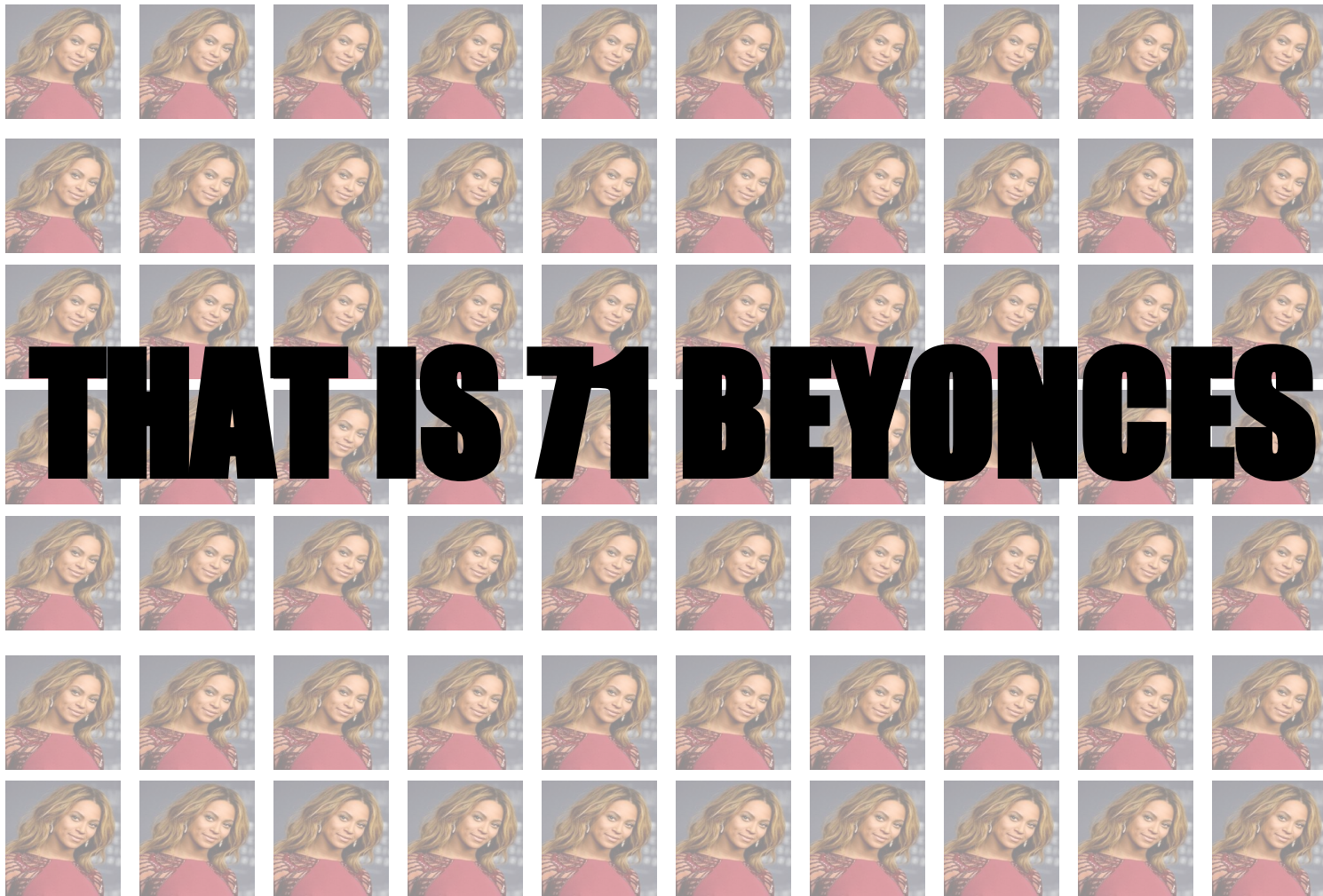
Richard Yuengling, Beer



David Paul, Medical
Devices



Richard Hayne,
Urban Outfitters



If they aren't paying their fair share in taxes, where is all that money going?

Brian Roberts, Comcast CEO



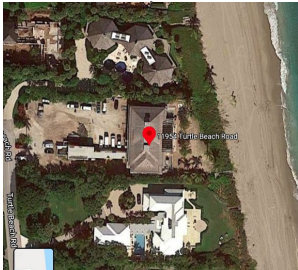
Net worth: \$1.8 billion

Compensation last year: \$36 million

His net worth increased from \$1.7 billion to \$1.8 billion during the pandemic

Comcast will pay no property taxes on their \$1.2 billion Technology Center until 2027

Denying Philly kids access to internet for online learning during pandemic



Roberts owns a \$14 million Philly condo, \$15 million mansion in Palm Beach and \$2 million Chestnut Hill mansion

Gerry Sweeney, Brandywine Realty Trust



POLITICS
The Real Estate Industry Pushed for \$160 Billion
in Tax Breaks in the CARES Act, Disclosure
Filings Show

One of the city's biggest real estate investors.

Frequent City Council Donor

**Poised to make \$\$\$ from massive tax break to
real estate investors in the CARES Act**

**Corporate Partner of the Philly Police
Foundation**



University of Pennsylvania



Endowment Amount: \$14 billion

President Amy Gutmann made \$3.9 million last year

Owns \$3.2 billion of real estate ---> pays NO taxes

Even 40% of their full real estate taxes= \$15.6 million per year for our city and schools

Budget Timeline

March 8: Kenney Announces \$5.2 Billion City Budget - includes incremental increases for the Library, other departments.

March 16: City shuts down for COVID19 Pandemic

May 1: Kenney announces Doomsday Budget with massive cuts. City Council begins to assess budget.

May 26-Now: City Workers Actions & Mass Movement around Defund the Police/Brutality

May 27th - June 9th: Budget Hearings

June 11th: Last Day for Council to introduce Tax Legislation (we believe)

June 25th: Last City Council Session

June 30th: Last Day for City to Approve Budget by law

What Did Kenney Cut? -- The Numbers

The Free Library: **Cut \$9.27M** (19%)

Parks & Rec: **Cut \$12.8M** (19%)

Public Health: **\$8.26M** (15%)

Homeless Services: **Cut \$12.8M** (21%)

Arts & Culture: **Cut \$4.17M** (100%)

Streets: **Cut \$18.8M** (11%)

Police: **Increase \$19.1M**

What Did Kenney Cut? -- The IMPACT

- Hiring freeze and layoffs, especially for part-time, seasonal, and temp workers. Already 250 at the library and nearly 1000 at Parks & Rec
- Reduced hours for Parks & Rec: pools closed
- Reduced Hours for Libraries - 5 day a week service & NO Sunday hours anywhere.
- Funding for arts and non-profits reduced or eliminated
- Street Sweeping plan eliminated
- Office of Workforce Development eliminated
- Pennsylvania Immigrant Family Unity Project funding, which offers [free legal counsel to immigrants](#). Legal counsel increases the chances by 5 ½ times that a migrant would obtain relief from removal.
- Huge cuts to the Housing Trust Fund

Two Options for Progressive Revenue

- **Personal Property Tax** - A tax on the sales value of stocks and bonds at the rate of .004% (\$4 from every \$1000 of value)
- **Gross Receipts Tax**- A tax on goods and services sold in the city of Philadelphia by businesses anywhere, with of \$200,000 of total receipts.

Next Steps

- **Tweet & Call-In (6/1 & 6/2)**
 - Toolkit: tinyurl.com/KenneysCutsCall
- **Recruit** friends, coworkers, and neighbors to call, using what you've learned here today.
- **Testify** publicly at the City Council budget hearing on June 9th.
- **Sign** the petition
 - phillywerise.com/defundthepolice
- **Keep organizing until we win!**

WHILE SERVICES ARE SLATED FOR HUGE CUTS... AT A TIME OF POLICE VIOLENCE...

PHILLY POLICE EXPECT A \$14M INCREASE

Here's how to sign up to testify at the public hearing June 9th at 3pm for what Philly needs instead of more money for police!

- Email Budget.hearings@phila.gov with your full name, a phone number where you can be reached
- Write that you want to testify June 9th, at the 3pm - 5pm public testimony hearing
- Write that you want to speak on the budget bills: numbers #200285, 200286, 200287, 200288, and 200289, and 200291
- You should get an email back confirming that they will call you to testify on the 9th between 3pm - 5pm - write back to confirm your phone number!
- Prepare your 2-minutes-or- less testimony: what community services and supports should we spend money on instead of more money for policing?

AND WATCH THE POLICE TESTIFY JUNE 1ST BEFORE COUNCILMEMBERS AT PHLCOUNCIL.COM/WATCH-CITY-COUNCIL/ - TWEET WHAT WE NEED INSTEAD AT @PHLCOUNCIL AND WITH HASHTAG #PHLBUDGET!

Questions from the chat during the budget teach-in

Do citizens get to provide feedback on the budget the city puts together? Yes, that's what budget hearings for, but depends on how organized we are (why we are seeing such an impact on the budget now).

Is that related to our municipal bonds? (re: money going directly to the bank)

Is the Philadelphia Department of Prisons under the Philadelphia Police? Answer: Prisons and police dept are separate depts, but investment in police feeds into that as well.

What percentage goes to K-12 schools? Similar: are schools part of the city budget? City and State share that responsibility, Kenney has increased amount of local money that

Re: PA Billionaire pandemic wealth increase: is that increase tied to the stock market rebounding? That and certain industries that never slowed down, candy, comcast, real estate going strong. Not all industries are sharing burden of pandemic, small business are struggling more than large corporations, but they use pandemic as excuse opportunity to lobby for more money

How do real estate taxes for corporations in Philadelphia compare to similar cities? 6% increase in property taxes, with exemption for certain property values. But not sure of comparison.

Is this okay to share the presentation? Yes! And a live recording link to come.

Resources from the chat during the budget teach-in

Nicole W. (She/her): An old but helpful article about real estate and city council:

<https://billypenn.com/2019/04/15/councilmanic-prerogative-in-philly-what-it-is-who-benefits-and-why-its-hard-to-change/>

Anonymous: I made this post if you want to play around with the budget numbers more:

https://www.reddit.com/r/philadelphia/comments/gyzq24/phl_city_budget_hearings_excel_sheet/?utm_medium=android_app&utm_source=share

Anonymous: Penn student here and found this atrocious: feel free to sign our petition to start addressing this

https://www.change.org/p/university-of-pennsylvania-petition-to-end-penn-police-state-collusion?recruiter=1100777654&utm_source=share_petition&utm_medium=copylink&utm_campaign=share_petition

Link to Kate's full presentation:

https://docs.google.com/presentation/d/1fAkU4hnhgJgJhNpUi0MhXj9Ng3AuaXON5qJ5rsqeYjc/edit?fbclid=IwAR1I_B0bcCFkDVo0DUvtFgPx8xbl8shASvymHESVHVOYjFQJpAmugVQdXtU

Nicole: <https://whyy.org/articles/who-benefits-philadelphia-leads-largest-cities-in-property-tax-breaks/>

Ways to Understand Food and the City Budget

Points to consider:

- City of Philadelphia spends \$20 million annually on food purchases
- 95% of these expenditures end up leaving Philadelphia

Program Funding (local, state, federal):

- Local taxpayer dollars
- Federal reimbursements (CACFP, NSLP, NSB)
- State subsidies (State Food Purchasing Program)

Going Deeper: Food and the City Budget

Who City Programs Feed:

- Inmates & Corrections Officers
- People experiencing homelessness
- People in shelter or congregate care
- Youth at summer camps and PlayStreets
- Youth in Out-of-School-Time programs
- Youth at PJJSC

Other City Food Types:

- Catering (e.g. public meetings)
- Concessions (food trucks at Love Park)
- Emergency Catering (e.g. feeding first responders during COVID-19)

Going Deeper: Food and the City Budget

Department/Program	Meal Type & Eater	Cost per meal	Menu
Parks & Recreation Summer Meals Program	Lunch for PlayStreets participant (includes labor & delivery)	\$2.98	Turkey & Cheese on WG Wheat Bagel, Lettuce & Tomatoes, Apple Slices, 1% White Milk
Department of Prisons	Inmate Lunch (includes labor and partially subsidizes correctional officer meals)	\$2.08	Turkey Bologna, Wheat Bread, Mustard, Pasta Salad, Fruit, Cookies, Vitamin C beverage packet
Emergency Operations Center - Civil Uprising Response	Lunch for National Guard and PPD, competitively bid	\$12.00	Chicken and vegetables over rice in sweet chili sauce, Pepper steak in a hoisin sauce over rice or pasta, Falafel and Tofu over rice in soy ginger sauce, Baked Ziti with marinara, Chips, Fresh Fruit, Cakes, snacks and Cookies, Soda, Water, Powerade, Juice and Coffee
Emergency Operations Center - Citizens Bank Park Testing Site	Lunch for volunteers and City staff, including PPD, Fire, and PDPH, not competitively bid	\$20.00	Chicken cutlet, Roasted red peppers, Sautéed spinach, Provolone cheese, Swedish meatballs, Soup of the day Soda, water, powerade, iced tea, Chips, Fresh Fruit, Cakes, snacks and Cookies

Going Deeper: Food and the City Budget

How and with whom the City of Philadelphia spends money, including on food and food services, tells us what the City values.

If we want to **change** how the City spends its money, then we need to advocate for **policy that changes it.**

Going Deeper: Food and the City Budget

Current food purchasing policies:

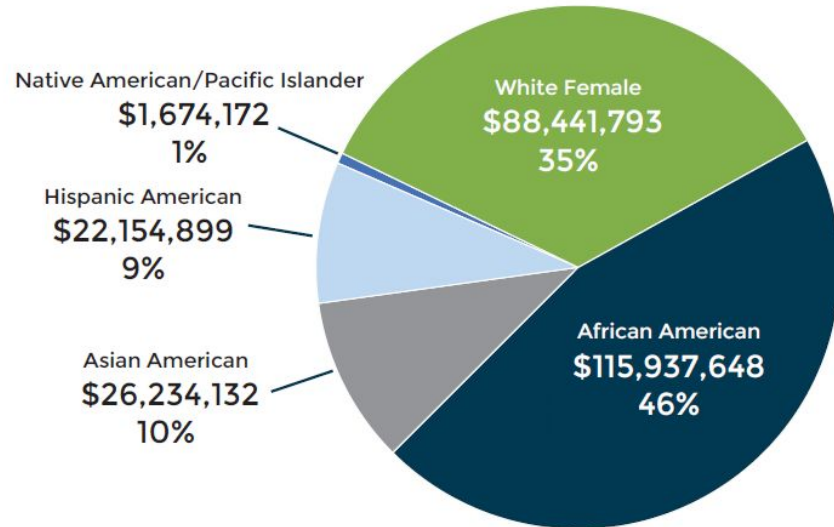
1. Nutrition Standards: type of food purchased and served
2. “MWBE Goals”: goal across all contracts from all departments to have 35% of total spend go to “Minority-Owned Businesses” and “Woman-Owned Businesses”
 - a. MWBE names and definitions are part of City Charter

Action: Food and the City Budget

Office of Economic Opportunity
Fiscal Year 2019 annual report
shows what types of firms
participated by demographic

- City surpassed goal in FY19 (37%)
- Only 14% of total contract spend went to Philly MWBEs

FIGURE 7:
FY 19 M/W/DSBE Participation by Demographic (City Only)



Action: Food and the City Budget

Barriers to Getting City Contracts

- Knowing where to look
- Two-step registration process (certify as a MWBE, then register with City)
- Short bid windows
- Waiting a long time for payment

What else? Type in Chat!

Going Deeper: Food and the City Budget

What would a better food purchasing policy look like?

- Prioritizes Black-owned, POC-owned, and immigrant owned businesses
- Prioritizes businesses located in Philadelphia
- Listens to and responds to the needs/requests of community
- Supports health, environmental sustainability, fair labor practices, and a local supply chain

What else? Type in the Chat!

Action: Food and the City Budget

FPAC has been here before: Good Food Procurement

- Currently no policy
- Not just the food—the source
 - Healthy workers
 - Sustainable businesses
 - Equitable contract participation
 - Local businesses
- Racial equity + Good food = better for eaters, businesses, neighborhoods



Going Deeper: Food and the City Budget

The Mayor's Office is interested in purchasing policy recommendations that support anti-racist agenda and greater food access

- Address COVID-response and uprisings against endemic racism and police brutality
- FPAC's role: policy recommendations to Philadelphia Mayor
 - Timing: city budget and COVID-spending review
 - City view: spending reveals priorities
 - Our view: City spending to undo racism, support food access

Action: Food and the City Budget

What can support food access and an anti-racist food spending agenda?

- Implement a **policy and incentives** that prioritize MWBEs, and specifically Black-owned businesses in Philadelphia, on food-related contracts
- Add incentive for good food practices, like **supporting health and fair labor**
- Prioritize **community-ownership of food relief efforts** by transferring power and resources from City-run sites to communities
- **Support businesses** to know about and respond to opportunities, get paid, and launch/scale up their businesses
- **What else?**

Action: Food and the City Budget

FPAC plans to make a policy recommendation to the City in ONE WEEK

1. Consult with content experts among FPAC membership
 - a. LMK if you've got thoughts: molly.riordan@phila.gov
2. Finalize policy memo and circulate to FPAC Appointed Members
3. By **EOD Monday 6/15**, all edits to purchasing policy memo
4. By **noon Wednesday 6/17**, final vote on policy memo by FPAC appointed members to go to Mayor's Policy Office

Questions from Chat

Do MWBE goals represent percentage of MWB in city population?

A: No, the 35% goal is based on increasing the benchmark goal over time. There is currently dispute over how many MBEs and WBEs exist in Philadelphia, in part because it can be difficult to find aggregated data about businesses that do not have any employees (sole proprietorships). which characterize many MBEs and WBEs, like caterers and child care centers. The City is currently working on a study to understand the full scope of MBEs and WBEs and their needs.

Comments From Chat

Support community health...Hah! In Hunting Park we are battling the SEPTA gas plant!


Access to affordable local commissary kitchen

Resources on definitions/application procedure for registering MWBE:

<https://www.theenterprisecenter.com/certification>

I think it would be a good time to put out the value and importance of one parent or partner being able to stay home to take care of food shopping and food prep or their family's. There are only so many hours in the day and this COVID 19 brought out how important it is to have 1 parent or partner at home. Food is essential it takes time to make it right.

Next Steps

- If you missed the sign-in poll earlier, please fill it out at: **menti.com & use code “22 62 54”**
- Fill-out post survey at bit.ly/FPACJuneSurvey by Friday 6/12 
- [Get involved with FPAC](#)
- Attend an upcoming subcommittee meeting
 - [Anti-Hunger](#): 3rd Tues of every month from 3-4:30pm (6/16)
 - [Workforce + Economic Development](#): 4th Tues of every month from 5-6:00pm (6/23)
- Apply for and share FPAC's Strategic Planning RFP due 6/28: bit.ly/FPACStrategicPlanUpdated
- Study up by checking out the resources slides

Thank you!



@nealsantos

Fill-out post survey
bit.ly/FPACJuneSurvey
by Friday 6/12



Resources

- [Movement for Black Lives 2016 Policy Platform](#)
 - [Beyond Access: What the Movement for Black Lives' Policy Says About Food](#)
- [Movement for Black Lives Week of Action June 1-7 Demands](#)
- [Scaffolded anti-racist resources for white people](#)
- [PROJECT 2024: BLACK POWER RISING PILLARS](#)
 - Mass engagement
 - Local power
 - Electoral strategy
 - Leadership development
 - Building across movements/multiracial strategy

Definitions from AORTA and the US Federation of Worker Co-ops

Racism:

1. The systematic oppression of people of color.
2. A belief in the supremacy of whiteness and the institutional power to enforce that belief.
3. A system that takes resources from people who are not considered white to disproportionately advance those who are considered white